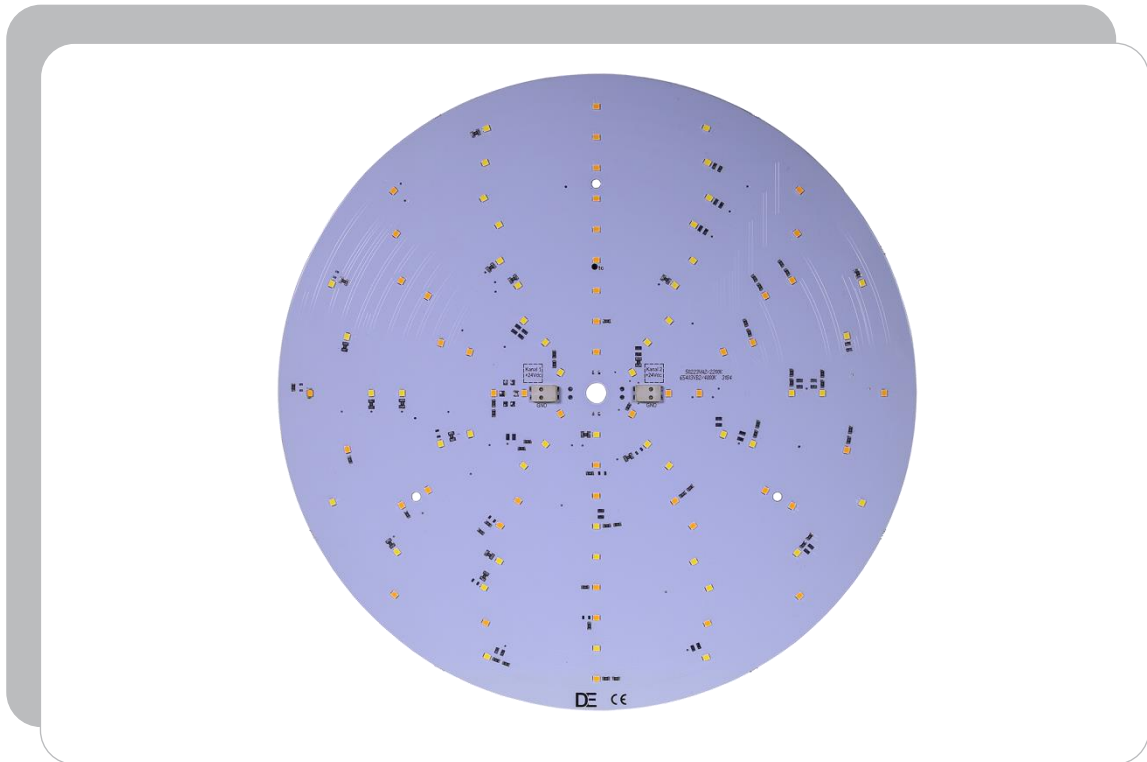
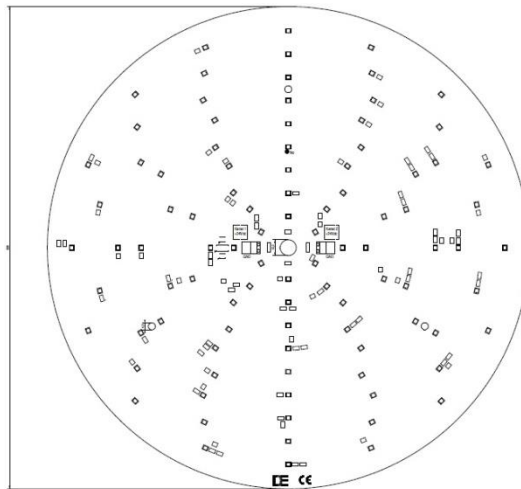
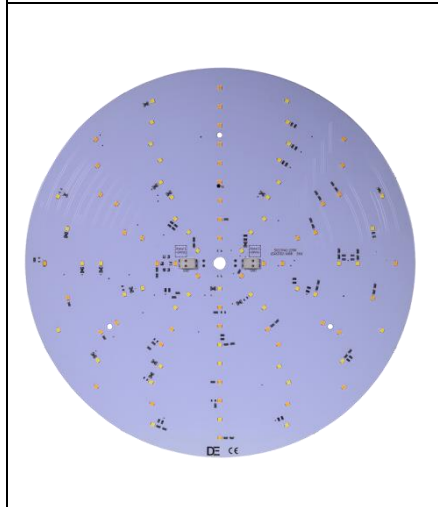


LED-Leiterplatte

 **FR4-Leiterplatte Ø308mm**



Drees GmbH Sundern / GERMANY	FR4-Leiterplatte Ø308mm, 700mA	Kategorie: SMD-FR4-Leiterplatte
		2019-03-08
		R001



SMD-FR4-Leiterplatte Ø308mm, Konstantstrom 700mA, Klemmleiste
 SMD-FR4-PCB Ø308mm, constant current 700mA, terminal strip

IP00 III CE

Technische Daten / specifications:

LED-Typ LED type	SMD-LED 2835
Abstrahlwinkel beam angle	120°
Umgebungstemperatur (ta) ambient temperature (ta)	-20°C – +45°C
Gehäusetemperatur (tc) case temperature (tc)	max. 65°C
Schutzklasse safety class	III
Schutzart protection class	IP00
Material /-stärke material / thickness	FR4 weiß / 1,5mm (+/- 10%) FR4 white / 1,5mm (+/- 10%)
Abmessungen dimensions	Ø308mm
Leitungsquerschnitt Steckklemme conductor cross section plug terminal	0,34-0,75mm ² AWG 18-24
Leitungsquerschnitt Steckklemme conductor cross section plug terminal	max. 9,0mm max. 0,35in

Folgende Angaben bei $t_j = 25^\circ\text{C}$ / following information at $t_j = 25^\circ\text{C}$

LED-Anzahl LED quantity	Eingangsstrom input current	Nennleistung rated power	Vorwärtsspannung forward voltage	Lichtstrom luminous flux	Funktion function	Farbtemp. CCT	CRI	Kanäle channels	Artikel-Nr. item no
2x 48	1400mA	typ. 26W	typ. 18,6Vdc max. 20Vdc	200- 2000lm	Dim-to- Warm	2250- 2550K	>80	1	564-362-2227
2x 48	1400mA	typ. 26W	typ. 18,6Vdc max. 20Vdc	200- 2000lm	Dim-to- Warm	2250- 2800K	>80	1	564-362-2230
2x 48	1400mA	typ. 26W	typ. 18,6Vdc max. 20Vdc	200- 2000lm	Dim-to- Warm	2250K 3750K	>80	1	564-362-2240
2x 48	700mA	typ. 13W	typ. 18,6Vdc max. 20Vdc	1700lm	Tunable White	2200K	>80	2	564-368-2240
	700mA	typ. 13W	typ. 18,6Vdc max. 20Vdc	1700lm		4000K			
2x 48	700mA	typ. 13W	typ. 18,6Vdc max. 20Vdc	1700lm	Tunable White	2700K	>80	2	564-368-2740
	700mA	typ. 13W	typ. 18,6Vdc max. 20Vdc	1700lm		4000K			
96	700mA	typ. 26W	typ. 37Vdc max. 40Vdc	3400lm	Dimmer	2700K	>80	1	564-362-2700
96	700mA	typ. 26W	typ. 37Vdc max. 40Vdc	3400lm	Dimmer	3000K	>80	1	564-362-3000
96	700mA	typ. 26W	typ. 37Vdc max. 40Vdc	3400lm	Dimmer	4000K	>80	1	564-362-4000

Ökodesign-Richtlinie / ecodesign directive

 Einstufung durchgeführt gemäß **2009/125/EG**
 classification according to **2009/125/EC**

 Energieeffizienzklasse **A+**
 energy efficiency class