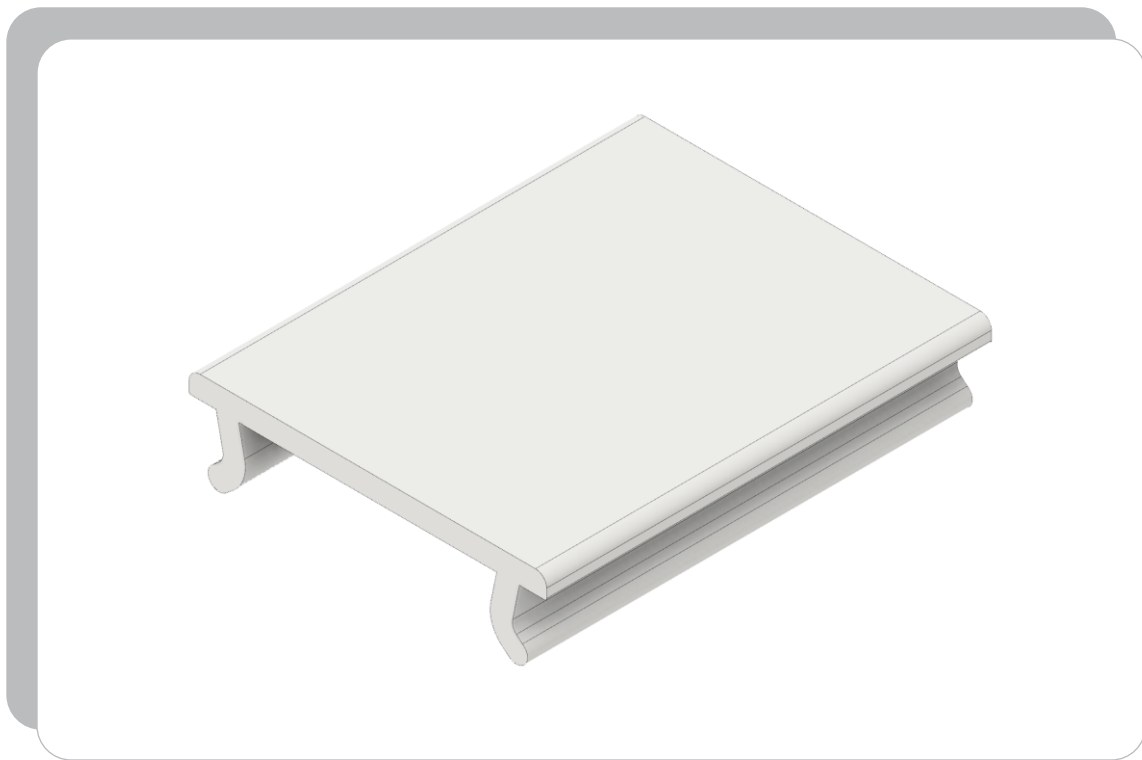
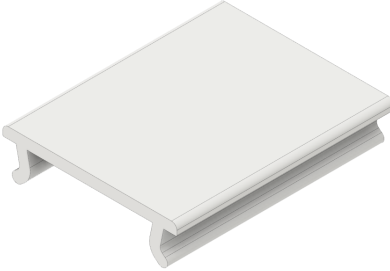
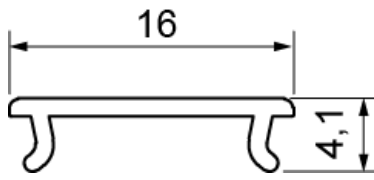


LED Profile



UNI 145



Drees GmbH Sundern / GERMANY	UNI 145 501-878-4XXXX	Kategorie: LED Profile																											
		13.01.2020																											
		R001																											
																													
<p>UNI 145, PMMA flache Profilabdeckung, UV-stabilisiert für LED Leiterplatten bis zu einer Breite von 12,8mm, UV-stabilisiert, max. 128°C, Brandverhalten B1 (DIN 4102)</p> <p>UNI 145, PMMA flat profile cover, uv-stabilized for LED-PCB with a breath of up to 12,8mm, UV stabilized, max 128°C, fire behavior B1 (DIN 4102)</p>																													
<p>Technische Daten / specifications:</p> <table style="width: 100%; border: none;"> <tr> <td style="width: 30%;">Höhe height</td> <td style="width: 40%;"></td> <td style="width: 30%; text-align: right;">4,1mm</td> </tr> <tr> <td>Gewicht weight</td> <td></td> <td style="text-align: right;">ca. 30g/m</td> </tr> <tr> <td>Material material</td> <td></td> <td style="text-align: right;">PC Polycarbonat</td> </tr> <tr> <td>Breite width</td> <td></td> <td style="text-align: right;">16mm</td> </tr> <tr> <td>Transmissionsgrad transmission factor</td> <td></td> <td style="text-align: right;">typ. 75%</td> </tr> </table>			Höhe height		4,1mm	Gewicht weight		ca. 30g/m	Material material		PC Polycarbonat	Breite width		16mm	Transmissionsgrad transmission factor		typ. 75%												
Höhe height		4,1mm																											
Gewicht weight		ca. 30g/m																											
Material material		PC Polycarbonat																											
Breite width		16mm																											
Transmissionsgrad transmission factor		typ. 75%																											
<table border="1" style="width: 100%; border-collapse: collapse;"> <thead> <tr> <th style="text-align: left;">Länge</th> <th style="text-align: left;">Besonderheiten</th> <th style="text-align: left;">Artikelnr</th> </tr> </thead> <tbody> <tr> <td>length</td> <td>particularities</td> <td>item no.</td> </tr> <tr> <td>1000mm</td> <td>flach, opal</td> <td>501-878-41000</td> </tr> <tr> <td>2000mm</td> <td>flach, opal</td> <td>501-878-42000</td> </tr> <tr> <td>3000mm</td> <td>flach, opal</td> <td>501-878-43000</td> </tr> <tr> <td>4000mm</td> <td>flach, opal</td> <td>501-878-44000</td> </tr> <tr> <td>5000mm</td> <td>flach, opal</td> <td>501-878-45000</td> </tr> <tr> <td>6000mm *</td> <td>flach, opal</td> <td>501-878-46000</td> </tr> <tr> <td>Profilzuschnitt</td> <td>flach, opal</td> <td>501-878-4</td> </tr> </tbody> </table>			Länge	Besonderheiten	Artikelnr	length	particularities	item no.	1000mm	flach, opal	501-878-41000	2000mm	flach, opal	501-878-42000	3000mm	flach, opal	501-878-43000	4000mm	flach, opal	501-878-44000	5000mm	flach, opal	501-878-45000	6000mm *	flach, opal	501-878-46000	Profilzuschnitt	flach, opal	501-878-4
Länge	Besonderheiten	Artikelnr																											
length	particularities	item no.																											
1000mm	flach, opal	501-878-41000																											
2000mm	flach, opal	501-878-42000																											
3000mm	flach, opal	501-878-43000																											
4000mm	flach, opal	501-878-44000																											
5000mm	flach, opal	501-878-45000																											
6000mm *	flach, opal	501-878-46000																											
Profilzuschnitt	flach, opal	501-878-4																											
<p>* Lieferung in Herstelllänge ca. 6050-6100mm * delivery in standard length as produced approx. 6050-6100mm</p>																													

Montagehinweis: Aufgrund unterschiedlicher Temperaturkoeffizienten der Materialien Aluminium und PMMA oder PC, sind bei einer Temperaturveränderung von 20°C Ausdehnungsunterschiede von bis zu 1,2mm je Meter möglich.

Assembly instructions: Due to different temperature coefficient of materials aluminum and PMMA or PC, temperature changes of 20°C can cause an expansion difference of up to 1.2mm per meter.