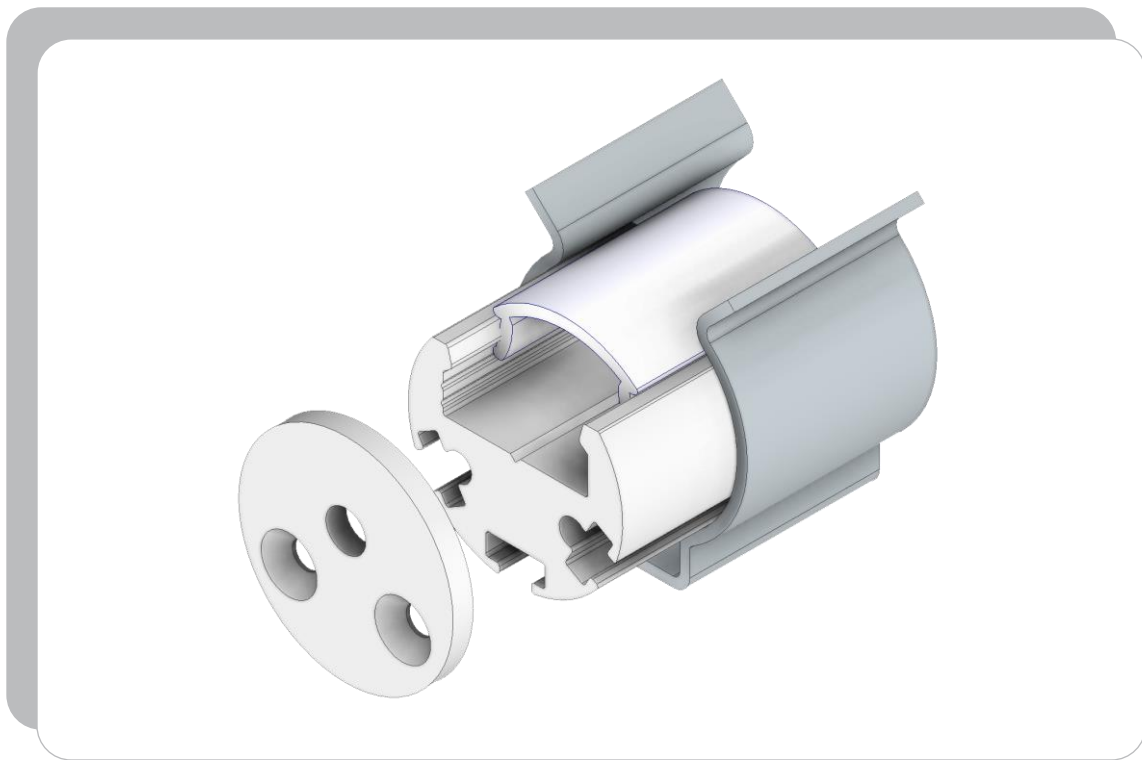
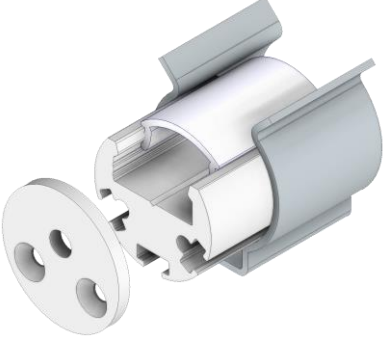
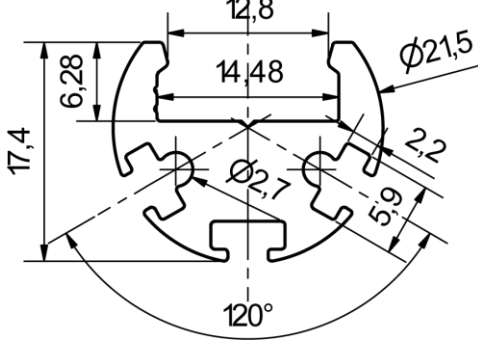


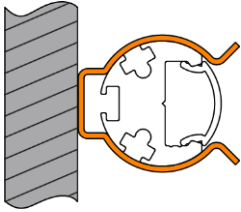
LED Profile

SPECIALS



Drees GmbH Sundern / GERMANY	SPECIALS 500-809-XXXX	Kategorie: LED Profile																											
		07.01.2020																											
		R001																											
																													
SPHERE Alu LED Profil, eloxiert für LED Leiterplatten bis zu einer Breite von 12,8mm SPHERE aluminium LED profile anodized for LED-PCB with a width of up to 12,8mm		IP20																											
Technische Daten / specifications:																													
Material material	Aluminium Al Mg Si 0,5 F 22, eloxiert E6/EV1 12my																												
<table border="1" style="width: 100%; border-collapse: collapse;"> <thead> <tr> <th style="text-align: left;">Länge</th> <th style="text-align: left;">Gewicht</th> <th style="text-align: left;">Artikelnr</th> </tr> </thead> <tbody> <tr> <td>length</td> <td>weight</td> <td>item no.</td> </tr> <tr> <td>1000mm</td> <td>typ. 550g</td> <td>500-809-01000</td> </tr> <tr> <td>2000mm</td> <td>typ. 1100g</td> <td>500-809-02000</td> </tr> <tr> <td>3000mm</td> <td>typ. 1650g</td> <td>500-809-03000</td> </tr> <tr> <td>4000mm</td> <td>typ. 2200g</td> <td>500-809-04000</td> </tr> <tr> <td>5000mm</td> <td>typ. 2750g</td> <td>500-809-05000</td> </tr> <tr> <td>6000mm *</td> <td>typ. 3300g</td> <td>500-809-06000</td> </tr> <tr> <td>Profilzuschnitt</td> <td>typ. 550g/m</td> <td>500-809-0</td> </tr> </tbody> </table>			Länge	Gewicht	Artikelnr	length	weight	item no.	1000mm	typ. 550g	500-809-01000	2000mm	typ. 1100g	500-809-02000	3000mm	typ. 1650g	500-809-03000	4000mm	typ. 2200g	500-809-04000	5000mm	typ. 2750g	500-809-05000	6000mm *	typ. 3300g	500-809-06000	Profilzuschnitt	typ. 550g/m	500-809-0
Länge	Gewicht	Artikelnr																											
length	weight	item no.																											
1000mm	typ. 550g	500-809-01000																											
2000mm	typ. 1100g	500-809-02000																											
3000mm	typ. 1650g	500-809-03000																											
4000mm	typ. 2200g	500-809-04000																											
5000mm	typ. 2750g	500-809-05000																											
6000mm *	typ. 3300g	500-809-06000																											
Profilzuschnitt	typ. 550g/m	500-809-0																											
* Lieferung in Herstelllänge ca. 6050-6100mm Toleranzen nach DIN EN 12020-2 * delivery in standard length as produced approx. 6050-6100mm tolerances according to DIN EN 12020-2																													
Montagehinweis: Aufgrund unterschiedlicher Temperaturkoeffizienten der Materialien Aluminium und PMMA oder PC, sind bei einer Temperaturveränderung von 20°C Ausdehnungsunterschiede von bis zu 1,2mm je Meter möglich. Assembly instructions: Due to different temperature coefficient of materials aluminum and PMMA or PC, temperature changes of 20°C can cause an expansion difference of up to 1.2mm per meter.																													

Montage / assembling

**Z U B E H O E R**

501-878-01000 // UNI 145, Polycarbonat Deckelprofil farblos

501-878-51000 // UNI 145, Polycarbonat Deckelprofil opal

550-471-86 // SPHERE, Profilendstück mit Kabelloch

550-491-86 // SPHERE, Profilbefestigungsklemme